

SUPERFILLER SR2 & SR4

FILLER/WEIGHERS FOR BULK SEMI-LIQUID OILS & FATS



The Superfiller SR4 is a four head Bulk Weighfiller designed for semi-liquid oils and fats, such as shortening and margarine. Also available in a two head model, the Superfiller SR2.





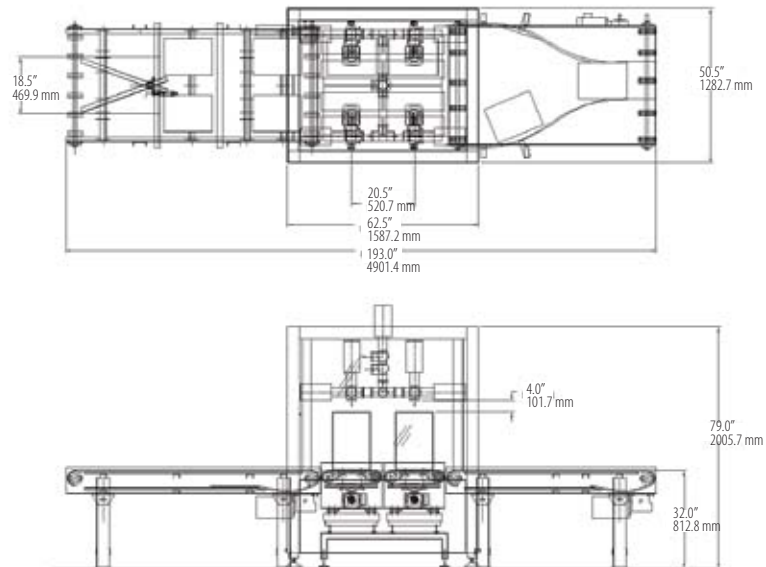
TECHNICAL SPECIFICATIONS SUPERFILLER:

Output:	Superfiller SR2 up to 12 tons / 26,000 lbs./hour Superfiller SR4 up to 18 tons / 40,000 lbs./hour
Line speed:	700-1400 cases per hour depending on fill weight.
Case sizes:	To requirement, typically from 10 kg / 22 lbs to 25 kg / 55 lbs.
Accuracy:	+ / - 2 deviations of 20 grams or better.
Tare:	Pre-set or automatic tare of each container.
Controls:	Allen Bradley with Panelview 1000 touch screen display, Siemens optional.
Construction:	All Stainless steel.
Valves:	Highest quality, adjustable three position (bulk, dribble, closed), 3A sanitary valves, polished 316 stainless steel with quick removal connections.
Nozzles:	OKI non-drip nozzles, 3A polished, 316 stainless steel with quick removal connections.
Re-melt:	Extreme duty two position diverter valve to filler or re-melt.
Conveyors:	M600 stainless steel wash-down tabletop conveyor system with diverter from single lane to dual lane and back. Variable speed conveyors with heavy duty case stops and clamps for fast and accurate case indexing.
Voltage:	All 3 Ph Voltages to requirement.
Air:	80-100 PSI, 6-8 Bar, 1/2" supply clean, dry air.

FEATURES

Non-drip nozzles.	Cleaner, more accurate process reduces cleaning, eliminates moving parts above the product and enhances product presentation.
Digital load cells.	Fastest response time provides higher accuracy and less product give away.
All stainless steel finish.	Clean and durable.

BENEFITS



SUPERFILLER OPTIONS:

- Heat tracing or jacketed valves.
- Case erectors and bag inserters.
- Bag uncuffer/closers and case sealers.

