

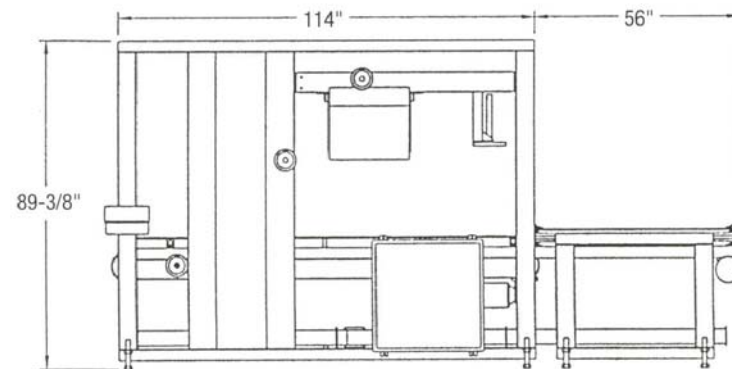
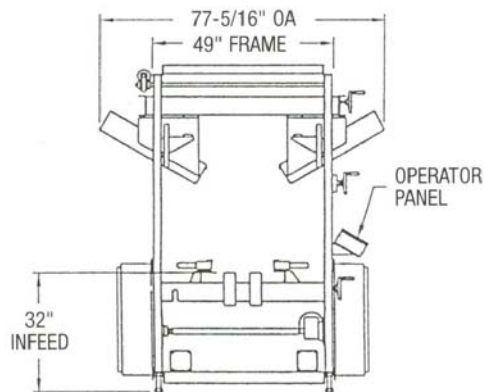
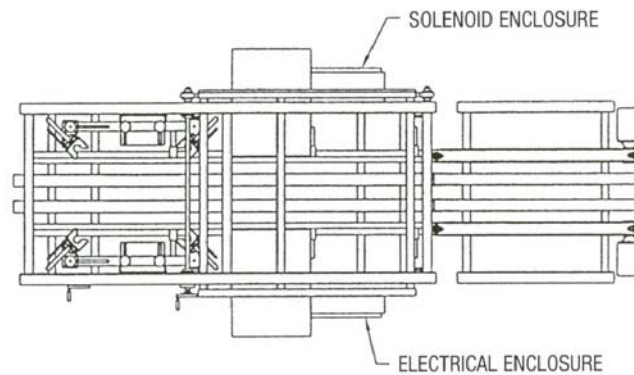
POLYBAG DECUFFER/PACKAGE TOP SEALING

(Tape Top Closure) (Glue Top Closure)	Model PBD-AT 24 Model PBD-AG 24		Model PBD-AT 32 Model PBD-AG 32		Model PBD-AT 42 Model PBD-AG 42	
	Max.	Min.	Max.	Min.	Max.	Min.
Case Size Range						
K/D Case Length (L + W)	24"	15"	32"	21"	42"	28"
Long Panel (L)	16"	10"	22"	12"	27"	16"
Short Panel (W)	12"	5"	16"	9"	21"	12"
Case Depth	15"	6"	18"	8"	25"	10"
	Speed to 15/min.		Speed to 12/min.		Speed to 10/min. depending upon case and bag size	

Electrical Characteristics: 230/240 VAC, 3 phase, 60 Hz, 20 A breakers.
Air Requirement: 80 psi clean dry air, 10 cfm
 Mild steel or stainless steel machines for USDA and other environmental conditions.

NOTES:

- CASE RANGE SIZE: 9" W x 12" L x 8" H MIN
16" W x 22" L x 18" H MAX

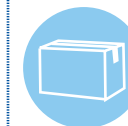


FOR ALL ADDITIONAL INFO CONTACT FACTORY. 408-995.5811

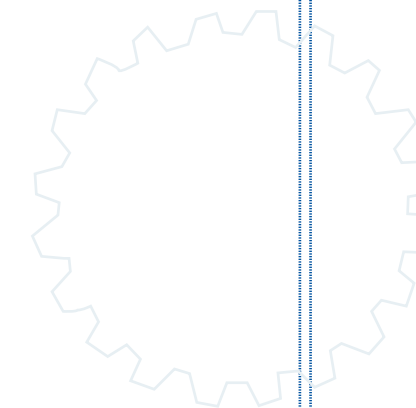
K&R
EQUIPMENT INCORPORATED



PBD-FC™ POLYBAG IN-BOX DECUFFER FOLDER CLOSER INTEGRATED CASE SEALER



- All-in-one rugged design.
- Tape or hot melt.
- Small foot print.
- Full Lexan interlocked guarding.
- Allen Bradley PLC.
- SEW motors & gear boxes.
- OKI "Blue Max" taping heads.
- Heat seal optional model.



kandrequip.com

1110 N. Seventh Street San Jose, CA 95112 tel: 408-995-5811 fax: 408-995-0512



K&R's new generation of Poly Bag Decuffer/Package Top Sealing Systems provide a cost-effective way to increase the productivity of existing bulk packing facilities, as well as ease the conversion from manual or semi-automatic operations to a comprehensive, high-tech automation solution.

Essentially, these K&R systems mechanically decuff and progressively fold the poly bag to form a double plastic cover over the product. The case flaps are then folded and sealed with pressure sensitive tape or hot melt adhesive.

Designed to be used with most weighing and filling machines, K&R systems keep downtime and maintenance costs to the minimum as they are ruggedly built and engineered for the highest

reliability in continuous duty applications. Additionally, their compact design saves valuable floor space. All units are equipped with guarding to meet standard safety requirements.

With K&R's Poly Bag Decuffer/Package Top Sealing Systems, bulk packers will benefit from significant gains in product quality, productivity and cost reduction.

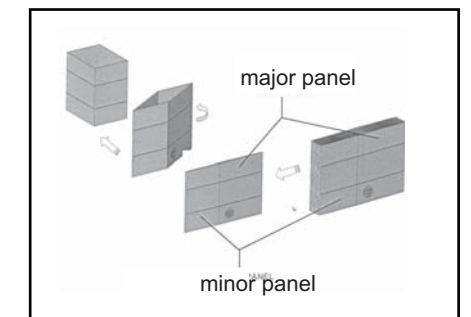


- Up to 40% greater throughput depending on case size.
- Operates at up to 15 cases per minute.
- Handles KD case sizes of 24, 32 and 42 inches.
- Decuffer available individually.
- For optimum space utilization, sealer can be located separately.
- Easy setup with simple handwheel height and width adjustments.
- Low power and air consumption.
- Stainless steel models for USDA applications.
- For larger size containers, consult K&R.

Completely redesigned K&R system provides up to 40% greater throughput. Also operates with other case forming, filling and closing equipment in automated packaging lines.



Right hand box: requires right hand machine.



Left hand box: requires left hand machine.

